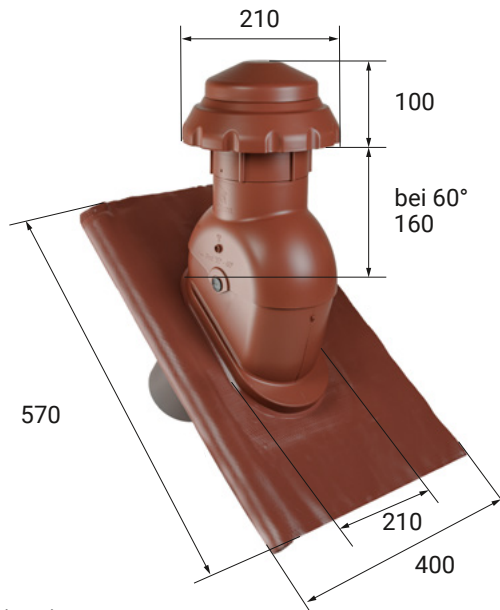




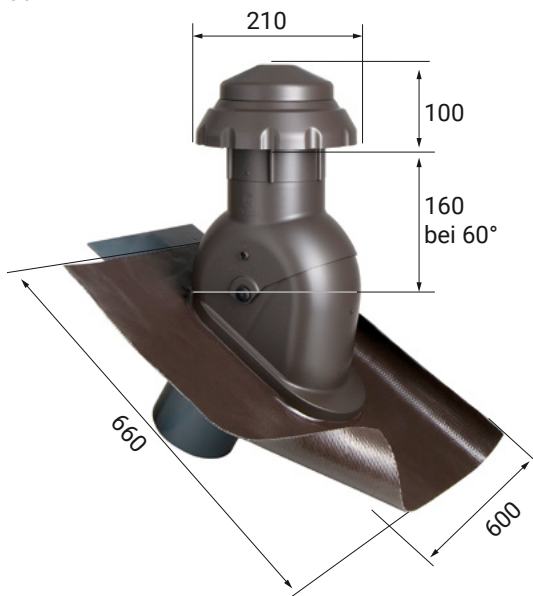
# FLECK Auraflex universal vent

## DN 125



Dimensions in mm

## DN 150



Dimensions in mm

## PRODUCT INFORMATION

The FLECK Auraflex universal vent is available in the versions DN 125 with removable weather cap incl. reduction to DN 100 as well as in DN 150 without reduction. The flange is made of a high-quality rolled lead substitute and can be universally adapted to the roofing.

### Material

- The main components are made of highly weather-resistant, durable special rigid PVC
- The circumferential skirt made of mouldable lead substitute material can be universally moulded to almost any type of roof tile
- Colours: Black, Red, Brown

### Construction material (fire reaction) class

B2 as per DIN 4102

### Optional accessories:

- Flexible universal hose DN 100 or DN 125 complete with hose clip and reducer available, as well as flexible universal hose in DN 150 with connecting sleeve DN 150
- Backflow clap
- Flair head (lacquered in tile colour)
- Below roof condensate separator (KWA)

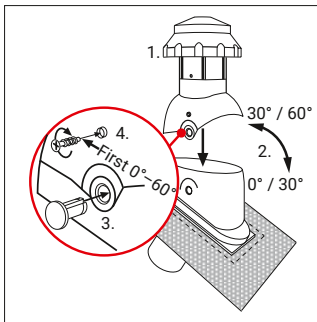
### Note

Where copper or bitumen surfaces are exposed to water, the flexible flange must be surface treated. The surface can be treated, for example, with PERFORM Extra Protection.



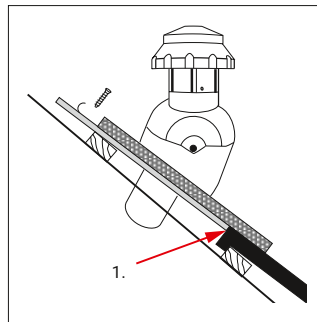
## TECHNICAL NOTES

### Set roof pitch

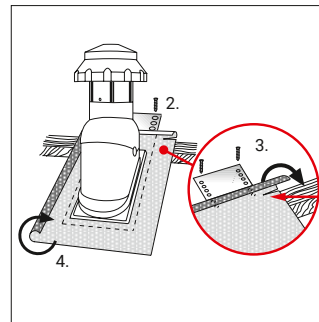


1. Top part of vent can be placed in two positions 0–30° and 30–60°
2. Align vertically according to roof pitch
3. Insert hinge pins
4. Fix with the enclosed screws

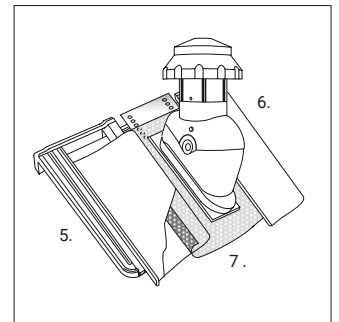
### Installation note



1. Base plate should abut in front of the lower tile if possible

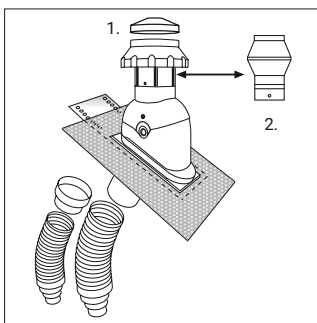


2. Drill holes in the base plate and screw it tightly to the roof batten
3. Cut the skirt horizontally above the roof batten and flange it to the front
4. Shape the edges of the skirt into a water gutter as required to prevent lateral penetration of draining water



5. Place the tile on the adjacent roof tiles and ensure a rain-proof form fit to the flexible skirt; if necessary, form the flexible skirt again to the adjacent roof tiles

### Mounting the Flair head



1. Removable weather cap (DIN 1986-100)
2. Standard head interchangeable with flat head
3. Attach the DN 125/DN 100 reduction adapter and/or an optional flexible universal hose for DN 100 or DN 125 connections